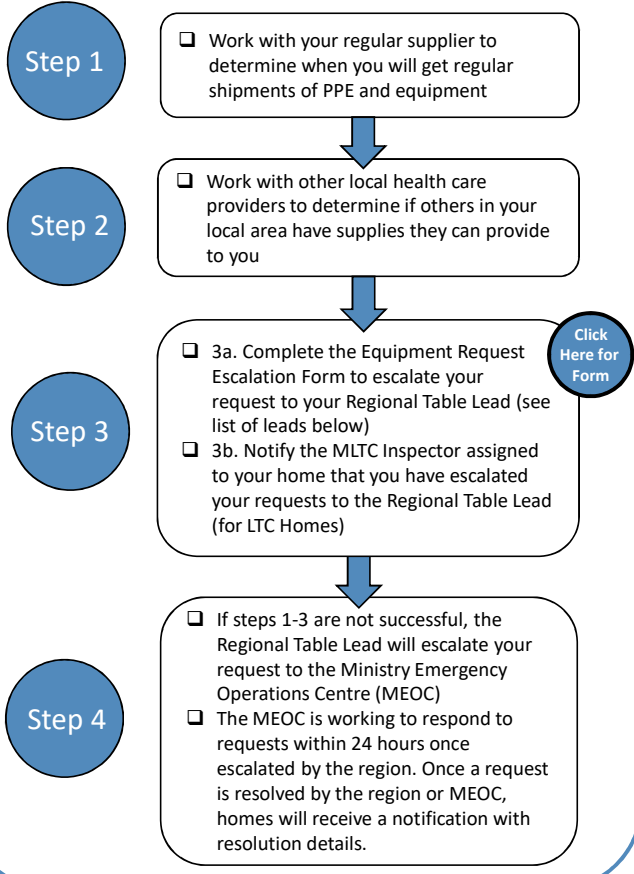


Personal Protective Equipment (PPE): Guidance for the LTC & RH Sectors (Version 2.0: May 11, 2020)

PPE Escalation Process (Applicable for both the LTC and RH sectors)

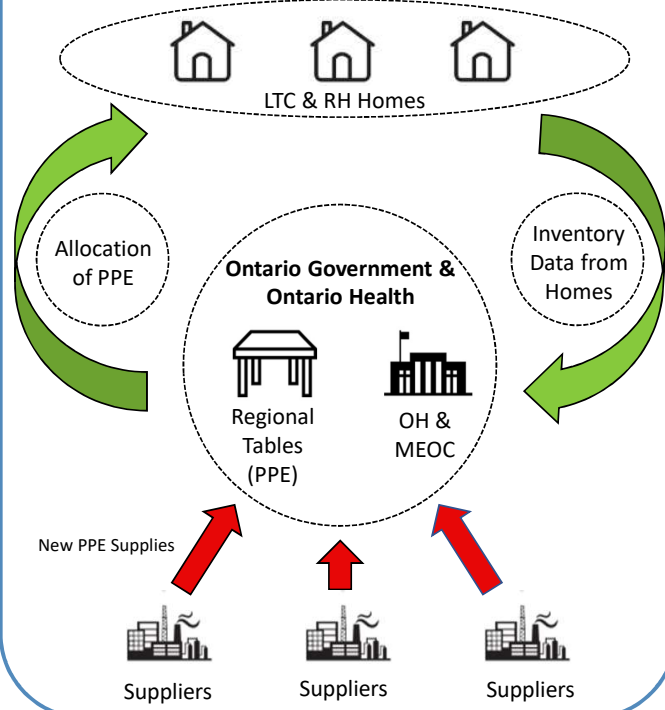
Once you have ascertained that, despite stewardship and conservation efforts, you have a supply shortage take the following steps:



PPE Survey

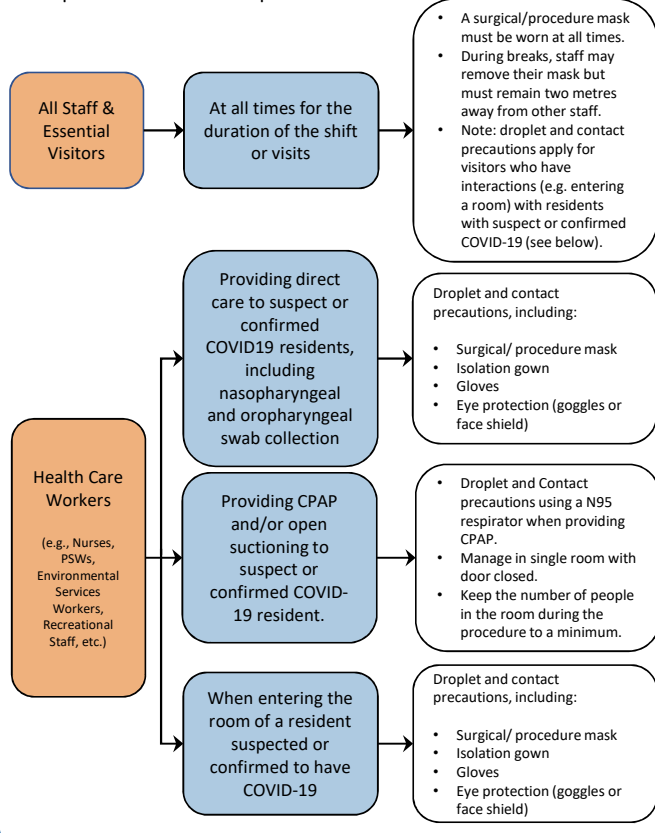
Health Service Providers across Ontario are contributing data on their PPE inventories, creating a provincial view of where supplies are available, and where they are urgently needed.

This information will be used to inform Ontario Health and regional tables in their support for health service providers, will allow us to react quickly in case of a local outbreak, and will empower the government to aggressively pursue new PPE supplies in a constricted global supply chain.



Guidance on the Use of PPE in LTC and RH Homes

Health Care Workers perform a point-of-care risk assessment (PCRA) before every resident interaction which helps to determine the correct PPE to use used. The guidance below represents minimum expectations.



Reference Resources: IPAC Recommendations for Use of Personal Protective Equipment for Care of Individuals with Suspect or Confirmed COVID-19 (as of April 6, 2020); Directives # 1, 3, and 5 (issued by the Ontario CMOH on March 30, 2020, April 15, 2020, and April 10, 2020, respectively); and Guidance for Mask Use in LTC Homes and Retirement Homes (issued by the Ministry of Health as of April 15, 2020)

Regional Table Leads (PPE & Critical Suppliers)

Central

- Susan Gibb: Susan.Gibb@lhns.on.ca

East

- Paul McAuley: Paul.McAuley@3so.ca
- Leslie Motz: lmotz@lh.ca

North

- Matthew Saij: sajm@tbh.net
- Michael Giardetti: giardetm@tbh.net

Toronto

- Rob Burgess: Robert.Burgess@sunnybrook.ca
- Nancy Kraetschmer: Nancy.Kraetschmer@tc.lhns.on.ca

West

- David Pigg (SW): David.Pigg@hmms.on.ca
- Doug Murray (WW): Doug.Murray@grhosp.on.ca
- Sue Nenadovic (HNHB): Sue.Nenadovic@niagarahealth.on.ca
- Renée McIntyre (ESC): Renee.McIntyre@transformssso.ca